

**Creating
a More**

OPEN & DIVERSE

Westphal

**Help BRIDGE Scholars
Build Opportunity and
Inclusion in the Arts
and Design**



DREXEL UNIVERSITY
BRIDGE
Scholars Program
Westphal College of Media Arts & Design


A BRIDGE TO STUDENT SUCCESS

The Antoinette Westphal College of Media Arts & Design is committed to ensuring and sustaining an environment where all people feel welcome and safe to be themselves — as individuals and in the work they create.

Westphal has implemented **BRIDGE — Build Relationships in Diverse Group Experiences** — to ensure that the College’s student population better reflects the diverse society they will serve as artists, designers, performers and scholars.

Westphal BRIDGE Scholars is a comprehensive learning community designed to enhance the success of underrepresented minority and first-generation students, including their recruitment and supporting their ability to graduate with a Drexel degree.

We seek supporters who share our vision and values and who strive to make an immediate impact.



“It’s been said that the power of art to remind us of our humanity has always been a major component of change in our society. Westphal actively supports a culture of diversity and inclusion, we have no tolerance for racist sentiments or actions, and we are committed to helping all of our students to grow, experiment and be successful in and out of the classroom and in their chosen professions. BRIDGE fuels and accelerates this.”

— Dean Jason S. Schupbach



ACADEMIC EXCELLENCE

BRIDGE Scholars are provided with individualized academic support and interdisciplinary programs to ensure persistence and graduation. Strategies include:

- **Individualized academic support** every academic quarter. Students are required to:
 - 1) meet with the Westphal BRIDGE Director each term to review academic progress in every class,
 - 2) discuss trials and triumphs for each course, and
 - 3) create strategies for success in the quarter.
- **Leveraging Drexel-wide resources** such as the Writing Center and Math Resource Center, as well as tutoring at the LeBow College of Business and the College of Arts and Sciences.
- **Stipends and/or scholarships** for juniors and seniors to assist with tutoring in design-specific major courses.
- **Study sessions** every two weeks.
- **Degree and performance audits** for every student each quarter conducted by BRIDGE Scholars Director.

NOTE: To allow all underrepresented minority and first-generation students to participate, Westphal BRIDGE Scholars includes two tracks: one for freshman and sophomores, a second for juniors and seniors.

COMMUNITY, SERVICE AND TRAVEL LEARNING OPPORTUNITIES

BRIDGE Scholars participate in service-learning opportunities in Philadelphia, across the country and abroad, and serve as peer mentors to other students, including:

- **Peer mentoring for incoming students.** Juniors and seniors receive leadership development training to empower them to serve as examples of success for incoming students. Additional potential to work with Westphal's admissions department to serve as program ambassadors for prospective students and their families.
- **Stipend or scholarship** for juniors and seniors to tutor students in design-specific topics (awarded through an application process).
- **Volunteer opportunities** identified through an alliance with Drexel's Dornsife Center for Neighborhood Partnerships and Lindy Center for Civic Engagement.



CAREER DEVELOPMENT AND NETWORKING

BRIDGE Scholars learn how to develop career capital through engagement with prominent alumni and industry professionals, including:

- **Corporate and organizational site visits and tours** enabling BRIDGE scholars to meet with CEOs and executives in the arts.
- **Industry-specific career fairs** exposing students to specific career opportunities and to provide networking opportunities.
- **Participation in partnerships across Drexel** with the Black Alumni Council, Young Alumni Council, Steinbright Career Development Center, Black Faculty and Professional Staff Association, Bienvenidos (Latinx Faculty and Staff Association).
- **Speaker engagements and workshops** with industry leaders for networking and career guidance.





HOLISTIC SUPPORT

BRIDGE Scholars engage in activities that promote self-care, mental health and personal well-being, including:

- **Social and emotional support through strategic partnerships** including the Creative Arts Therapies and Counseling and Family Therapy departments of Drexel’s College of Nursing and Health Professions.
- **Monthly Sunday dinners** to foster camaraderie and facilitate networking among participants.
- **“Stress-free zone” activities** during final exam periods.
- **Financial literacy workshops** to develop skills for economic empowerment.

FUELING THE GROWTH OF BRIDGE SCHOLARS

To ensure the success of Westphal BRIDGE Scholars and the breadth of opportunities available to them, day-to-day operations are managed by a Director with a track record of advancing underrepresented minority and first-generation students. The Director offers 24-hour support and serves as point of contact for recruiting and retaining BRIDGE Scholars. The Director develops strategic partnerships across Drexel and throughout the arts and design professions to foster student success, meet the program's goals and prepare for the evolution and growth of individual students and the overall program.

As the BRIDGE Scholars Program evolves, our strategic planning process will identify and create learning (and potentially) living spaces within and near URBN Center tailored specifically to engage and advance BRIDGE Scholars. Increasing learning opportunities for students through travel also is a priority.

Donations can support these critical areas to give more students access as BRIDGE Scholars and help accelerate their success.

NOTE: Westphal's strategic goal is to enable BRIDGE to build and sustain a minimum \$150,000 annual budget in its initial stages.



GIVING OPPORTUNITIES

\$1 million +: Endow the Westphal BRIDGE Scholars Program

\$250,000: Endow the Westphal BRIDGE Program Director position

\$25,000: Support the full range of corporate site visits for one academic year

\$10,000: Support the full range of cultural excursions for one academic year

\$1,000: Sponsor one evening in the Sunday Dinner series

\$500: Support BRIDGE Scholar stipend for materials, special events or other student expenses

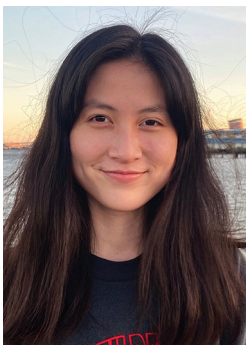
\$50 +: Support programming and workshops, including marketing, communications, seminars, speaker fees and special events

NOTE: In addition to cash gifts and pledges, planned gifts — including bequests and gifts from retirement income — also can be allocated to support Westphal BRIDGE Scholars.



“So far the BRIDGE program has been wonderful. It has allowed me to get a foot in the door at Drexel University and ground myself in the experience. Everyone is so kind and wonderful, and they truly want for all of us to succeed.”

— Jordyn Morris, Game Design & Production, '25



“I’ve collected so many invaluable pieces of wisdom from upperclassmen and faculty throughout the events that I’ve attended. As a freshman attending remote classes, this program allowed me to get to know and feel closer to the Westphal community.”

— Sage Zheng, Design & Merchandising, '24

DIVERSITY IN THE ARTS AND DESIGN PROFESSIONS STARTS WHERE PEOPLE LEARN.

Fuel Opportunity and Inclusion
by Supporting BRIDGE Scholars



**THE
FUTURE
IS A PLACE
WE MAKE.**

THE CAMPAIGN FOR DREXEL

CONTACT:

Nikolas G. Kozel, MS '12
Executive Director of Development
215.895.0268

215.360.1574 (Mobile)

ngk25@drexel.edu

GIVE:

giving.drexel.edu/westphalbridge



**THE
FUTURE
IS A PLACE
WE MAKE.**

THE CAMPAIGN FOR DREXEL

giving.drexel.edu/westphalbridge